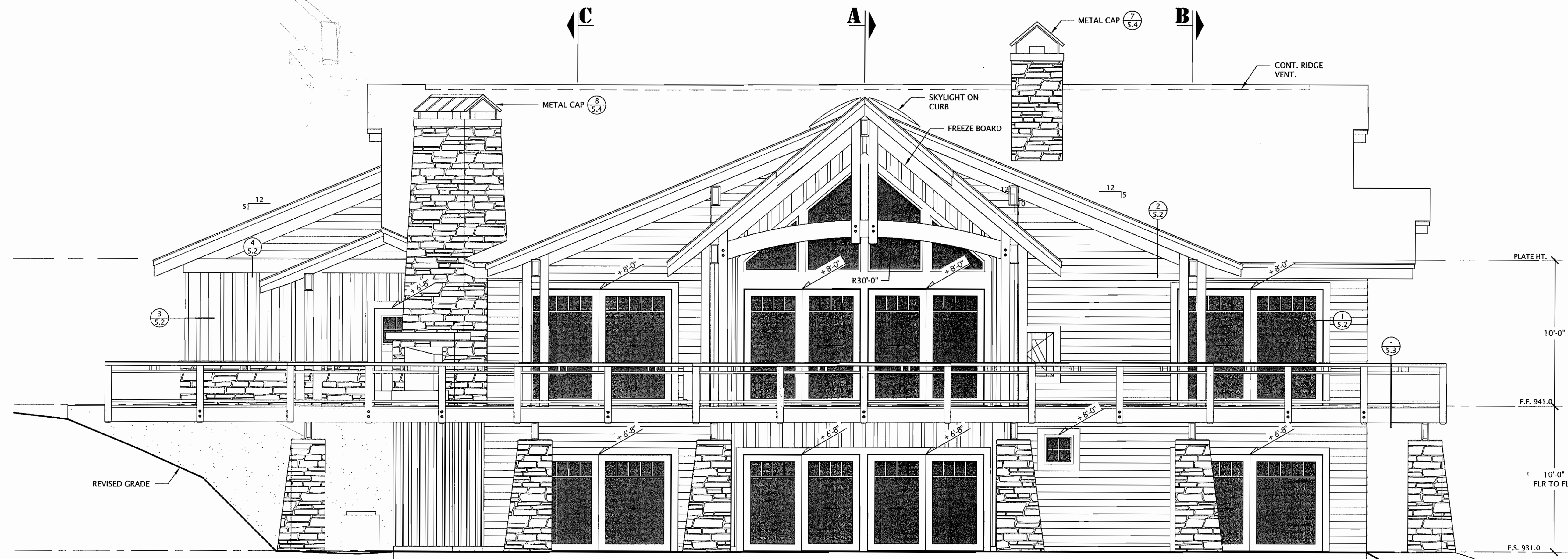
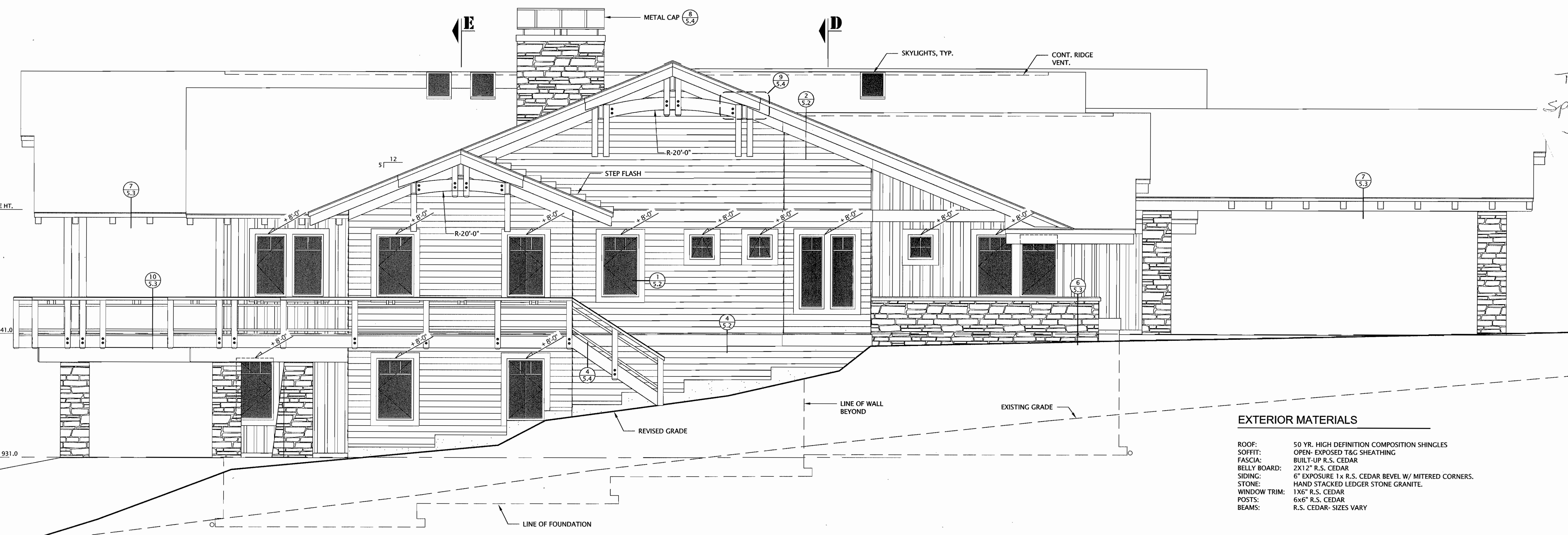


*Check
roofing. No this
actual, replace it
the way we're using?*



EAST ELEVATION

1/4" = 1'-0"
0 5 10 FEET



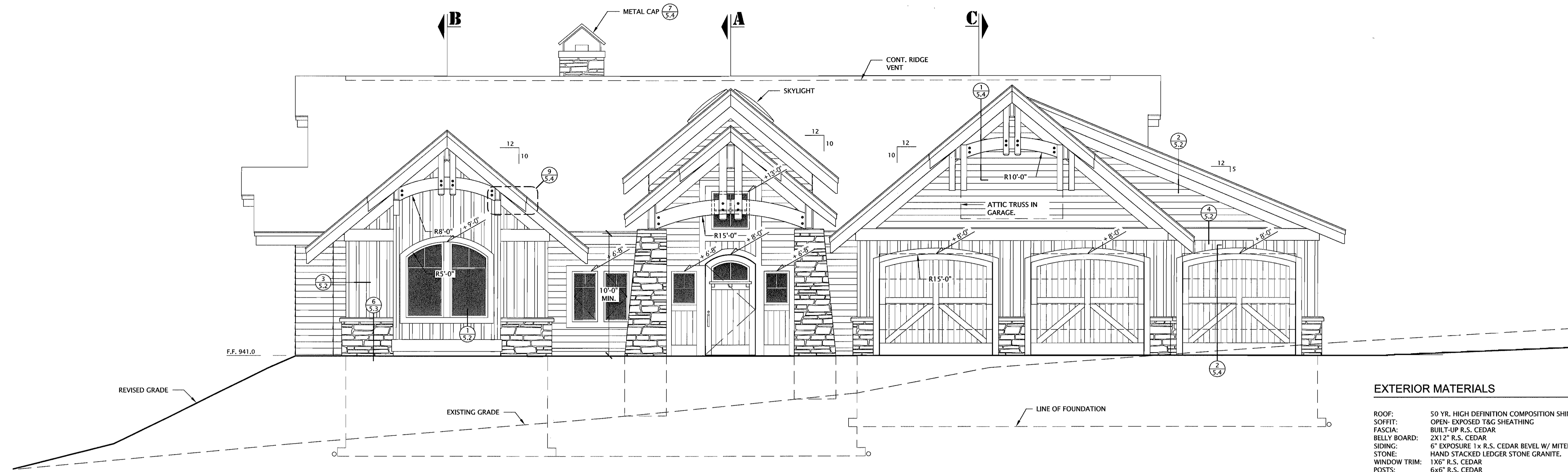
NORTH ELEVATION

1/4" = 1'-0"
0 5 10 FEET

EXTERIOR MATERIALS

- ROOF: 50 YR. HIGH DEFINITION COMPOSITION SHINGLES
- SOFFIT: OPEN- EXPOSED T&G SHEATHING
- FASCIA: BUILT-UP R.S. CEDAR
- BELLY BOARD: 2X12" R.S. CEDAR
- SIDING: 6" EXPOSURE 1x R.S. CEDAR BEVEL W/ MITERED CORNERS.
- STONE: HAND STACKED LEDGER STONE GRANITE.
- WINDOW TRIM: 1X6" R.S. CEDAR
- POSTS: 6X6" R.S. CEDAR
- BEAMS: R.S. CEDAR- SIZES VARY

ELEVATIONS		REVISIONS	
PROJ #	DATE	REVIS	CHECKED
09104	3/17/2010		
BID #	SET #		
		PERMIT	

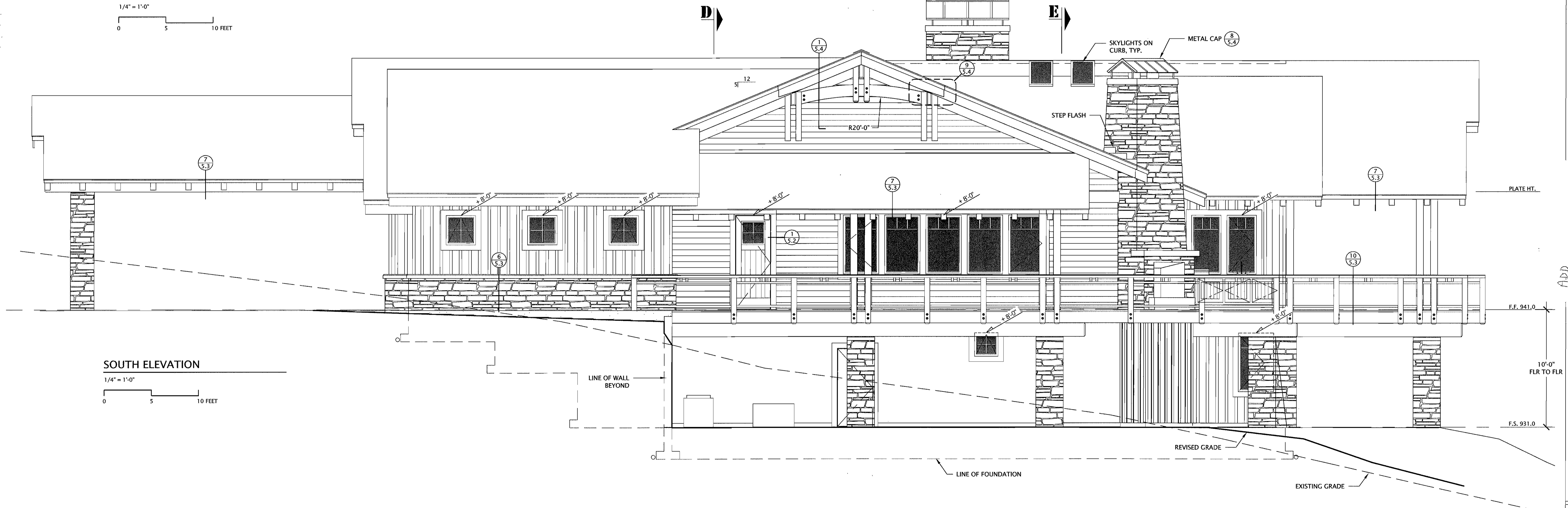


WEST ELEVATION

1/4" = 1'-0"
 0 5 10 FEET

EXTERIOR MATERIALS

- ROOF: 50 YR. HIGH DEFINITION COMPOSITION SHINGLES
- SOFFIT: OPEN- EXPOSED T&G SHEATHING
- FASCIA: BUILT-UP R.S. CEDAR
- BELLY BOARD: 2X12" R.S. CEDAR
- SIDING: 6" EXPOSURE 1X R.S. CEDAR BEVEL W/ MITERED CORNERS.
- STONE: HAND STACKED LEDGER STONE GRANITE.
- WINDOW TRIM: 1X6" R.S. CEDAR
- POSTS: 6X6" R.S. CEDAR
- BEAMS: R.S. CEDAR- SIZES VARY



SOUTH ELEVATION

1/4" = 1'-0"
 0 5 10 FEET

RESIDENCE
 FOOD LANE
 EST RIDGE ESTATES
 IDAHO

ADD INSULATION
 between
 walls
 See / 09/104/ LEB

ELEVATIONS		PROJ #	DATE	REVISION	CHECKER
BID #	SET #	09/104	3/17/2010		
PERMIT					
7.0					

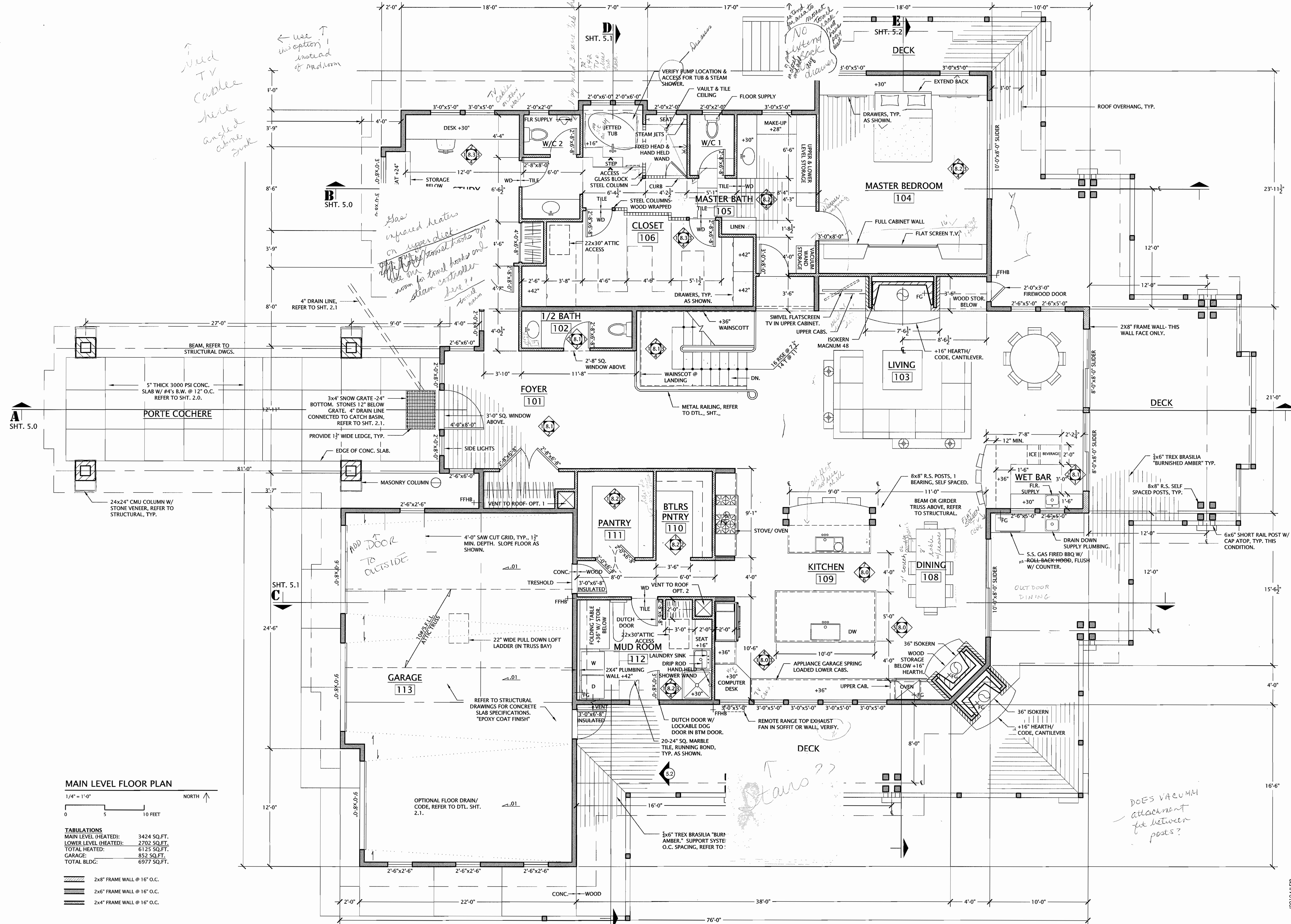
REVISIONS	

PROJ.#	DATE	REVISED	CHECKED
09104	3/17/2010		

BID #	SET #

PERMIT

4.0



Use ↑
 TV Cable
 here
 angle of
 above
 sink

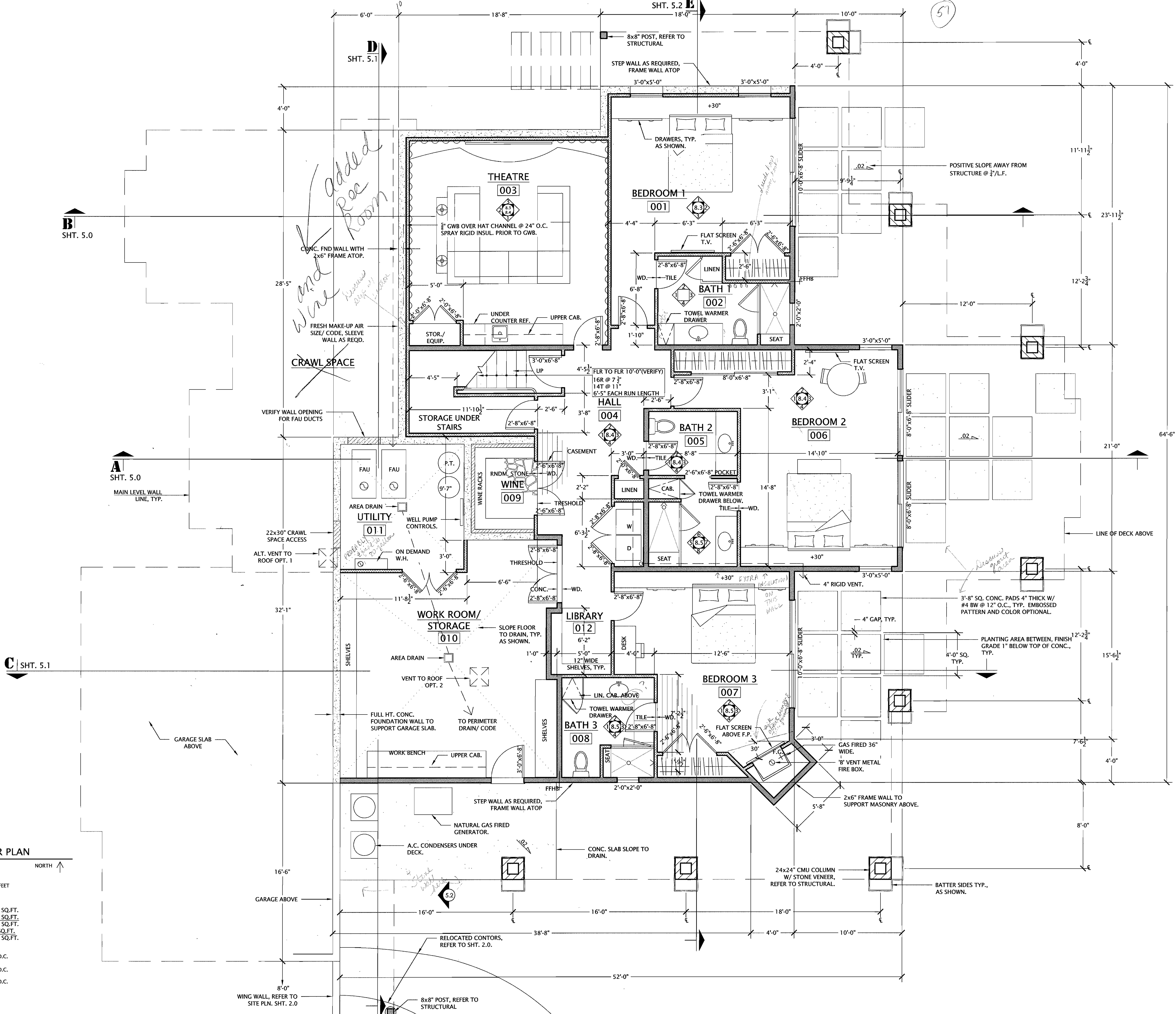
Use ↑
 this option
 instead
 of medium

See
 infrared heaters
 on upper deck
 the 2x4's travel books up
 use one for travel books and
 steam controller
 here

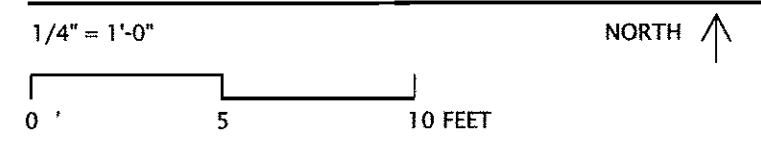
Stairs??

DOES VACUUM
 attachment
 fit between
 posts?

09104/LEB



LOWER LEVEL FLOOR PLAN



TABULATIONS

MAIN LEVEL (HEATED):	3424 SQ.FT.
LOWER LEVEL (HEATED):	2702 SQ.FT.
TOTAL HEATED:	6125 SQ.FT.
GARAGE:	852 SQ.FT.
TOTAL BLDG:	6977 SQ.FT.

- 2x8" FRAME WALL @ 16" O.C.
- 2x6" FRAME WALL @ 16" O.C.
- 2x4" FRAME WALL @ 16" O.C.

REVISIONS

--	--	--	--

LOWER LEVEL FLOOR PLAN

PROJ. #	09104
DATE	3/17/2010
CHECKED	
REVISED	

BID #	SET #